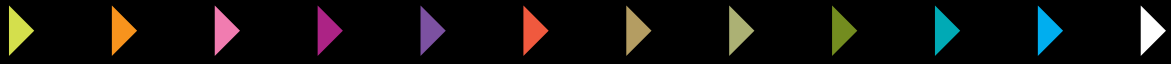


FURNITURE GUIDE



KONTOR

INTERIORS

SCHOOL

Dart
Supplies for Schools

Version 1

Order hotline 0151 548 9879

Introduction

Welcome to our new School Furniture guide. We've re-designed it to make it easier for you to choose from. We've made it clearer and more concise. All the products you are about to see have been carefully selected for their quality, functionality and suitability to your requirements.

Look out for the K-Range:-



These are ranges that **we** have painstakingly designed and developed with **you** - schools and colleges - in mind. They're designed to enhance your school interiors. They're built to withstand the rigours of school life. They're fitted by our own expert installers. And they're great value for money.

With our state-of-the-art manufacturing facility we have the ability to offer **truly bespoke** furniture, so if you can't see what you're looking for then give us a call. We want to give you the opportunity to create a consistent feel throughout your school.

We'd love to hear from you. We're not a catalogue company - we're a business built on our ethics - honesty, integrity and reliability, and a high level of customer care. Take advantage of our **FREE design and space-planning service**. Or if you'd like us to help you get the most out of your space we've got a team of enthusiastic consultants who'd be glad to come and see you.

We're here to be of assistance to you, so please get in touch with us to discuss your requirements.

Enjoy
 The KONTOR Team
 Tel: 0151 548 9879
 Fax: 0151 547 4443
 Email: mail@kontor.co.uk
www.kontor.co.uk

Order hotline 0151 548 9879

Contents

- ▶ Classroom Furniture 4-12
- ▶ IT Suites 13-15
- ▶ Dining Areas 16-18
- ▶ Libraries 19-21
- ▶ Cloakrooms 22-23
- ▶ Reception Areas 24-27
- ▶ Staff Rooms 28-29
- ▶ School Office 30-39
- ▶ Meeting Rooms 40-42
- ▶ Occasional Use / Events. 43-45
- ▶ Laboratories & Food Technology Rooms. 46
- ▶ Index 47

Order hotline 0151 548 9879



Tables

SPECIFICATION:

- Proven in the education market and passed FIRA tests for severe educational use
- Black or Grey frame (other frame colours available as specials)
- Hard wearing laminate top with MDF core
- Choose Top colour and edge detail
- Wide range of sizes and shapes



CLASSROOM TABLE

SPECIFICATION:

Welded frame table can be spiral stacked up to 4 or 5 high



STACK



SPECIFICATION:

- Proven in the education market and passed FIRA tests for severe educational use
- Easier for stacking than the welded frame
- Black or Grey frame (other frame colours available as specials)
- Hard wearing laminate top with MDF core
- Choose Top colour and edge detail
- Wide range of sizes and shapes

CLASSROOM TABLE – CRUSHBENT FRAME



SPECIFICATION:

- Use alongside rectangular tables for group work or push 2 semi-circular tables together to form a circular table
- Available with welded frame only

SEMI-CIRCULAR TABLE



SPECIFICATION:

- Available with welded frame only

CIRCULAR TABLE



SPECIFICATION:

- Use alongside rectangular tables for group work or push 2 trapezoidal tables together to form a hexagonal table

TRAPEZOIDAL TABLE



SPECIFICATION:

- Provide some individual storage for students with these tray tables
- Create attractive colour schemes with co-ordinating trays and tabletops or table edges
- Takes all standard trays
- Non-stacking

TRAY TABLE

To Order...

Choose Your Table

- Square**
 - 550 x 550mm
 - 600 x 600mm
 - 750 x 750mm
 - 900 x 900mm
 - 1200 x 1200mm
- Rectangular**
 - 1100 x 550mm
 - 1200 x 600mm
- Semi Circular**
 - 1100 x 550mm
 - 1200 x 600mm
- Circular**
 - 600mm diameter
 - 750mm diameter
 - 1100mm diameter
 - 1200mm diameter
- Trapezoidal**
 - 1100 (longest edge) x 550m
 - 1200 (longest edge) x 600mm

Other sizes available – please ask

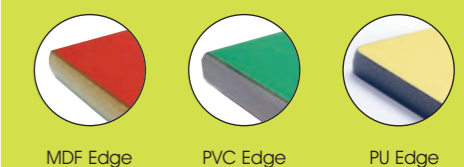
Choose your table height

- Size 1 460mm Age 3-4yrs
- Size 2 530mm Age 4-6yrs
- Size 3 590mm Age 6-8yrs
- Size 4 640mm Age 8-11yrs
- Size 5 710mm Age 11-14yrs
- Size 6 760mm Age 14-Adult

Choose your Top Colour



Choose your Edge Style



MDF Edge; Bullnose Edge, polished and lacquered

PVC Edge; A thick band of grey plastic which seals and protects the edge

PU Edge; A high impact and resilient spray.

Choose your frame style

- Crush Bent (slide stack)
- Fully Welded (spiral stack)

Coloured frames available – please ask

Chairs...



SPECIFICATION:

One-piece Moulded Polypropylene Classroom Chair

- Fully complies with EN1729 Posture and sitting requirements, and height regulations
- Extreme Durability – 15 Year Guarantee
- Stackable 15 High
- Choice of colour options



* Available in the colours as shown in the above picture.

TITAN CLASSROOM CHAIR



SPECIFICATION:

Ergonomic Design Classroom Chair

- Conforms with EN1729 Parts 1 & 2 (Comfort & Strength)
- Tamperproof Riveted Construction
- Standard & Fire Retardant Options
- Choice of colour options

MASTERCLASS CLASSROOM CHAIR



SPECIFICATION:

Highly competitive polypropylene chair

- Ergonomic design with lumbar support
- Extra Strong design with tamperproof riveted fixings
- Heights comply with EN12729 part 1
- Standard & Fire Retardant Options
- Choice of colour options

POLY SUPERIOR CLASSROOM CHAIR

CHAIR SIZE CHART

Desk Height	Chair Height	Recommended Body Height
540mm	310mm	1130-1270mm
600mm	350mm	1280-1420mm
650mm	380mm	1430-1570mm
700mm	430mm	1580-1720mm
700/760mm	460mm	1730-1840mm

Most products are compliant within 10mm of the above EN1729 Part 1 height guide.

SPECIFICATION:

- Unique seat shape and integral lumbar support
- Robust frame with footrest
- 5 shell colours
- 5 Year Guarantee



* Available in the colours as shown in the above picture.

LIPPED STUDENT SCHOOL



SPECIFICATION:

- Polypropylene or Wooden Seats
- Range of heights
- Integral footrest on higher stools
- Black or Grey frame
- Standard & Fire Retardant Options
- Choice of colour options

ROUND STOOL



SPECIFICATION:

- Range of heights
- 22mm Sturdy Tubular frame
- Integral footrest
- Black or Grey frame
- Standard & Fire Retardant Options
- Choice of colour options

RECTANGULAR STOOL

AVAILABLE COLOURS:

The Titan chairs and the Lipped Student Stools are available in the colours shown in their pictures. The Masterclass chair, Poly Superior chair, Round stool and Rectangular stool are available in the following colours:



*The flame retardant (FR) chair is tested to BS5852, FR6 ignition source 5. The flame retardant additive does cause slight shade variation. Due to reprographic colour restrictions, actual chair colours may vary in shade to the above scans.

Also available



call our hotline on 0151 548 9879 and ask about our other options...

Classroom Storage...

Shallow Tray Storage



6 SHALLOW TRAY UNIT ■



12 SHALLOW TRAY UNIT ■



Lockable beech doors available on all units

6 Tray Unit	360W x 453D x 617mmH
8 Tray Unit	360W x 453D x 789mmH
10 Tray unit	700W x 453D x 531mmH
12 Tray Unit	700W x 453D x 617mmH
16 Tray Unit	700W x 453D x 789mmH
18 Tray Unit	1030W x 453D x 617mmH
21 Tray Unit	1030W x 453D x 703mmH
24 Tray unit	1030W x 453D x 789mmH

Ask about Tray Storage Cupboards



18 SHALLOW TRAY UNIT ■

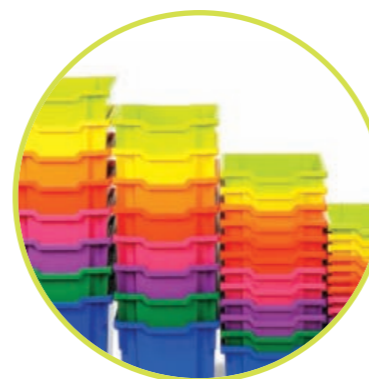
ALL UNITS DELIVERED ASSEMBLED

Deep Tray Storage



12 DEEP TRAY UNIT ■

12 Tray Unit	1358W x 453D x 707mmH
16 Tray Unit	1358W x 453D x 835mmH
18 Tray Unit	1026W x 453D x 1210mmH



Over 25 Tray colour options available

Extra Deep Tray Storage



12 EXTRA DEEP TRAY UNIT ■

6 Tray Unit	684W x 453D x 857mmH
12 Tray Unit	1342W x 453D x 857mmH
16 Tray Unit	1342W x 453D x 1115mmH

Book Storage



6 BAY KINDERBOX & TRAYS UNIT



MOBILE BOOK STORAGE UNIT

Art Storage



6 BAY KINDERBOX & TRAYS UNIT



SHELF & TRAY UNIT



A1 PLAN CHEST



MOBILE A1 PAPER STORAGE UNIT

General Storage



OPEN BOOKCASE



CUPBOARD - LOCKABLE

- 6 shelf Bookcase 900W x 300D x 1800mmH
- 4 shelf Bookcase 900W x 300D x 1500mmH
- 4 shelf Bookcase 900W x 300D x 1200mmH
- 3 shelf Bookcase 900W x 300D x 1000mmH
- 6 shelf Cupboard 1000W x 475D x 1800mmH
- 4 shelf Cupboard 1000W x 475D x 1500mmH
- 4 shelf Cupboard 1000W x 475D x 1200mmH
- 3 shelf Cupboard 1000W x 475D x 1000mmH

- Store
T I D A W A Y
Fitted Storage



Ask about our supply and install service

Classroom Storage Wall...



MULTIPLE INTERNAL FITTINGS OPTIONS ■



Make maximum use of floor space with fully fitted **Storage Wall!**



IT Suites



SPECIFICATION:

Unique computer benching system, highly durable and strong, incorporating safe CPU storage

- Made-to-measure to fit your space
- Minimal on-site installation time
- Non-messy/non-dangerous installation – can be safely installed during term time
- Fully powered & cable managed system
- Large range of colour options

BESPOKE ANCILLARY STORAGE SYSTEMS ■



K-Bench

SPECIFICATION:

- Secure CPU Storage option available
- Fully powered & cable managed system



K-BENCH

SPECIFICATION:

- This fully bespoke system can be manufactured to suit any room layout



K-BENCH

SPECIFICATION:

A variation of the highly successful K-Bench system, offering superior CPU storage in addition to all the benefits of the K-Bench system

- Control use of other equipment (eg cameras, flashdrives etc) through controlled access to CPU via locking CPU storage.
- Convenient desktop access to CPU



K-BENCH PLUS

SPECIFICATION:

Free-standing version from our K-Tech range with secure storage of CPU's within the centre console.

- Fully powered & cable managed system
- Large range of colour options
- Control use of other equipment (eg cameras, flashdrives etc) through controlled access to CPU via secure CPU storage.
- Convenient access to CPU's via removable access panels
- Minimal on-site installation time
- Non-messy/non-dangerous installation – can be safely installed during term time
- Large range of colour options



K-POD



K-BENCH ALUMINIUM

K-Bench Aluminium

SPECIFICATION:

Extremely cost effective Patented benching system, tested and certified for durability.

- Smart & Professional appearance
- Robust tested to BS5873-3 Level 5 (Severe)
- Modular System – Can be demounted and relocated, single modules can be changed if damage occurs without having to change long lengths of worktops
- Support legs can be positioned anywhere along the channel allowing maximum flexibility in layouts
- Support leg can be moved in towards wall as required allowing unobstructed working positions at any point along the bench
- Tops can be shaped and corners rounded for aesthetics and health & safety (no dangerous corners)
- Framework 100% recyclable and non combustible
- Huge range of colour and finish options available



IT Chairs

SPECIFICATION:

- Strong Polypropylene Shell
- Ergonomic design
- No removable parts
- Gas lift or manual height adjustment
- Available with Glides or Castors
- Junior and Adult sizes
- Available in 14 colours



MASTER CLASS IT CHAIR

SPECIFICATION:

- Strong and comfortable design
- Single height-adjustment lever
- Gas lift
- Available with Glides or Castors
- Vast choice of fabric colour options
- 5 Year Guarantee



TAMPERPROOF IT CHAIR – FIXED BACK

SPECIFICATION:

- Strong and comfortable design
- Integral lumbar support
- Single height-adjustment lever
- Gas lift
- Available with Glides or Castors
- Primary & Secondary sizes
- Vast choice of fabric colour options
- 5 Year Guarantee



TAMPERPROOF IT CHAIR – ADJUSTABLE BACK



Bistro Style

SPECIFICATION:

Enhance your canteen with this stylish range of dining furniture

- Wide range of exciting designs and colour options
- Choice of shapes and sizes
- Robust designs – 5 Year Guarantee
- Special tabletop surface technology:-

Contact us for
FREE OF CHARGE
Room Layout
Design service

Easy wipe clean • Cigarette & Flame Resistant • Scratch & impact Resistant



Mobile Folding Units



MOBILE FOLDING COMBINATION UNITS

SPECIFICATION:

Maximise the use of multi-purpose areas with this innovative canteen furniture range.

- With or without stools
- Maximum space efficiency
- Optimal storage
- Minimum set-up time – 1 person operation
- Variety of sizes and shapes
- Exciting top and stool colour options
- Revolutionary "Armour edge" for lasting appearance, protection and durability
- High build quality
- 15 Year Guarantee

SPECIFICATION:

Extremely cost effective solution for multi-purpose areas

- Rectangular, Octagonal or Circular shapes
- Easy to open & Close then wheel away
- Nest together for compact storage
- Polished MDF or Water resistant PVC edge options
- Choice of top colour

FREE ROOM LAYOUT DESIGN SERVICE



TILT TOP DINING TABLES

Folding Tables & Benches

SPECIFICATION:

Folding Table & Stacking Bench System.
Lightweight & versatile, easy to transport and use.



CONTOUR CANTEEN RANGE

SPECIFICATION:

- Wide range of sizes, shapes and heights
- Tables weigh only 6.75kg to 13kg
- Simple folding mechanism
- Strong polypropylene corners
- Smart aluminium edge
- Wipe clean tops
- Tables fold flat for compact storage
- Benches stack up to 10 high
- Range of innovative accessories to assist use
- Choice of top colours



CONTOUR TABLE & BENCH SET

SPECIFICATION:

- Designed with space and safety in mind



STORAGE TROLLEY

Fast Food Units

SPECIFICATION:

Maximise your floor space usage with these extremely robust units.

- Special tabletop surface technology:-
 - Easy wipe clean
 - Cigarette & Flame Resistant
 - Scratch & impact Resistant
- Minimal leg obstructions makes floor cleaning easier
- Highly durable Polypropylene seats available in many designs and wide range of colours
- Various unit designs available
- Complete space planning service available



MOOD FAST FOOD UNIT



Evolve...

Libraries

Evolve Shelving System

SPECIFICATION:

Made to measure and fully fitted by our expert fitters, with it's warm timber appeal this range will enhance your area.



- Extremely cost effective system
- Choice of shelf options
- Wall fixed or free standing units
- Complimentary Mobile Book Storage units, Book return units, Promotion & Display units.
- Integrated signage and Graphic solutions

Matching Benching systems, counters and storage





Advance

ADVANCE Cantilever Shelving System



SPECIFICATION:

- Choice of shelf options
- Static or Mobile Units available
- Complimentary Mobile Book Storage units, Book return units, Promotion & Display units
- Integrated signage and Graphic solutions
- An almost limitless range of design based end panels
- Innovative ancillary items



“Exciting seating and storage options”

Design Service
Let us help you create a truly inspiring Library.





Peg & Bench Units

SPECIFICATION:

A durable solution for the most demanding areas of a school.

- Peg Rails and slats from solid Ash, sealed and polished
- Frame from 38 x 38mm square tubular steel, powder coated to any of our standard RAL colours.
- Wall and floor anchored
- Complete design and installation service



Choose from benching, bag racks and shoe racks



Space planning service available

Lockers

SPECIFICATION:

High quality range of lockers, tested to BS4680:1996 for strength & rigidity

- 1, 2, 3, 4, 5, 6, 8 and 16 compartment options
- Activecoat hard wearing anti-bacterial coating for the most stringent hygienic environment
- Vent system allows each compartment to "breath"

- Full strengthener welded into each door for increased security
- Welded plinth between each compartment makes each compartment totally separate and improves rigidity
- Ergonomic card holder & lock cover protects from key scratches
- Hasp & staple locks for padlocks available
- Range of exciting colours

SPECIFICATION:

Benchmounted versions available



SPECIFICATION:

Maximise compartment numbers with this innovative design.

- Strong & robust construction
- 6 exciting door colours and stylish silver body



POD LOCKERS



FLO

K-Style Reception Counters

SPECIFICATION:

- Create a warm welcome to your school with this design.
- Made to measure to fit your space
- Manufactured from real wood veneers or hard wearing wood effect melamines.
- DDA Compatible
- Raised counter sections provide privacy
- Choice of additional features including Glass shelving, feature lighting, hinged hatchways etc.
- Range of matching storage available
- Wide range of finishes



FLO CURVED RECEPTION COUNTER



Linea



Range of matching storage and back office furnishings available



SPECIFICATION:

Modern and functional design will enhance any School Entrance area.

- Made to measure to fit your space
- Manufactured from real wood veneers or hard wearing wood effect melamines.
- DDA Compatible
- Raised counter sections provide privacy
- Choice of additional features including Glass shelving, feature lighting, hinged hatchways etc.
- Wide range of finishes

Ask about security systems

LINEA RECEPTION COUNTER



HilLine

HILINE RECEPTION COUNTER

SPECIFICATION:

HiLine Reception Counter Where security is an issue this popular design provides an attractive solution.

- Made to measure to fit your space
- Integrated sliding glass hatch system
- Manufactured from real wood veneers or hard wearing wood effect melamines.
- DDA Compatible
- Raised counter sections as convenient "signing in points"
- Range of matching storage available
- Wide range of finishes

Reception Seating

SPECIFICATION:

Stylish range of seating ideal for receptions and informal meetings.

- Fully upholstered in wide range of fabrics and leathers
- Table comes with attractive and hardwearing wooden top



TUB CHAIR

SPECIFICATION:

Strong and attractive seating range

- Low level Beech frame
- Matching Beech Table
- Available with arms and as a 2 seater
- Wide range of fabric choices



MERIDIAN WOODEN FRAMED SEATING



ELEMENTS BENCH SYSTEM

SPECIFICATION:

Contemporary and highly flexible benching system

- Range of sizes to fit into any space
- Curved and corner units
- Optional arms
- Choose full length or half length back, or no back at all
- Mobile versions with braked castors
- Optional linking mechanism
- Wide range of fabric options

SPECIFICATION:

Fully upholstered modular seating range for flexible configurations.

- Deep filled cushions for comfort
- Matching table with oak or Glass top
- Optional Arms
- Wide range of fabric choices



ASPECT MODULAR SEATING



Fitted Kitchens

SPECIFICATION:

- Wide range of commercial kitchen styles and finishes.
- Full range of appliances
- Fitted by our trained installers
- All plumbing and electrical work undertaken by our approved tradesmen
- Let us complete the Staffroom refurb:-
 - Tiling
 - Decor
 - Flooring
 - Blinds



Storage Solutions

SPECIFICATION:

- Large range of adjustable pigeonhole units for ultimate staffroom organization
- Range of finish options
- Aluminium label holders fitted as standard

WALTON PIGEONHOLE UNITS ■



For meeting
Tables & Chairs
see pages
40 to 42

Staffroom Seating

SPECIFICATION:

Fully upholstered modular seating range for flexible configurations.

- Deep filled cushions for comfort
- Matching table with oak or Glass top
- Optional Arms
- Wide range of fabric choices



ASPECT MODULAR SEATING ■

SPECIFICATION:

More upright seating range with posture curved back rests for improved comfort.

- Create seating arrangements using flexible arm configurations
- Stylish Beech frame
- Matching Wooden Coffee Tables – Square & Rectangular
- Wide range of fabric choices



PACIFIC DELUXE WOODEN FRAMED SEATING ■



SPECIFICATION:

Strong and attractive seating range

- Low level Beech frame
- Matching Beech Table
- Available with arms and as a 2 seater
- Wide range of fabric choices

MERIDIAN WOODEN FRAMED SEATING ■

SPECIFICATION:

Create space efficient and flexible seating arrangements with this stunning and extremely comfortable design.

- Features include stylish wooden shell and metal skid base
- Available with or without backs
- Optional wooden or glass linking tables
- Wide range of fabric options



STRETCH LINKING BENCH SYSTEM ■

Office Furnishings...



K-FORM ASH

SPECIFICATION:

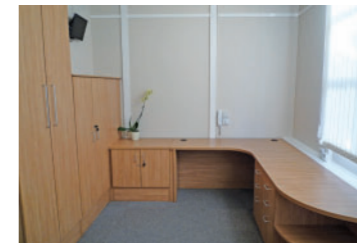
Fully fitted office furniture range designed to maximise the floor space usage and create a functional and uncluttered environment.



K-FORM OAK

SPECIFICATION:

- Fully scribed & fitted by trained installers
- Extremely Cost Effective
- Highly Robust construction
- High level specification
- Range of attractive finishes to choose from



Compact and tidy storage systems



Maximise your floor space usage





Wire management solutions for central desking

High density storage options



K-FORM BEECH



Complete space planning & design service



Choose from a fantastic range of internal options to suit your requirements.

STORAGE WALL

SPECIFICATION:

Maximise your floor space usage with fully fitted floor-to-ceiling storage wall.

- Endless range of door shapes and finishes to suit your taste



Bi-fold, Tambour, hinged, & other door options



Desking Options

Please note these images are computer generated and for illustrative purposes only. Actual product may vary slightly in design.



DOUBLE WAVE DESK



WAVE DESK (RIGHT HAND SHOWN)



CORNER DESK (RIGHT HAND SHOWN)



120 DEGREE DESK



RANGE OF DESK-END MEETING POINTS



RANGE OF MEETING TABLES



DRAWER UNIT - 2 STANDARD + 1 FILING DRAWERS



DRAWER UNIT - 4 STANDARD DRAWERS

Wooden Storage Options

SPECIFICATION:

- Huge Range of Bookcase units
- Open fronted or with doors • Optional Glass or Wooden doors
- Wide range of heights and widths • Adjustable shelving



Please note these images are computer generated and for illustrative purposes only. Actual product may vary slightly in design.



TALL STORAGE - HINGED DOORS



TALL STORAGE - ROLL-AWAY TAMBOUR DOORS



LOW STORAGE - HINGED DOORS



LOW STORAGE - ROLL-AWAY TAMBOUR DOORS



DESK-HIGH SIDE FILING UNIT



2, 3 & 4 DRAWER FILING CABINETS



DESK HIGH QUARTER CIRCLE STORAGE UNIT



SPECIFICATION:

Comprehensive range of good quality and extremely price competitive steel storage units.

Steel Storage

SPECIFICATION:

- Available from stock for rapid delivery
- Grey or Coffee & Cream
- 7 Year Guarantee
- Anti-tilt mechanism
- 100% drawer extension
- Smooth roller ball runners



FILING CABINETS - LOCKABLE

SPECIFICATION:

- Available from stock for rapid delivery
- Grey or Coffee & Cream
- 5 Year Guarantee
- Robust welded carcass construction
- 3-point locking for added security
- Complete with dual purpose shelves that can accommodate under shelf lateral files



TWO DOOR CUPBOARDS - LOCKABLE

SPECIFICATION:

- Tambour doors roll easily out of the way
- Wide range of internal fitment options
- Available from stock for rapid delivery
- Grey
- 10 Year Guarantee
- Robust welded carcass construction



TAMBOUR DOOR CUPBOARDS - LOCKABLE

SPECIFICATION:

Wide range of Tested and Insurance Rated Fireproof safes available, for cash, paper records and data backup products. Call now for expert advice.



FIREPROOF SAFES



Screens & Display

SPECIFICATION:

Wide range of free-standing and desk-mounted screens available.

- Wide range of finish options
- Wide range of shapes and sizes

Notice Boards

SPECIFICATION:

Wide range of high quality noticeboards

- Choice of sizes and colours
- Available with or without aluminium frame
- Standard and fire retardant options
- Tamperproof option with locking clear polycarbonate hinged cover



Operators Chairs

SPECIFICATION:

A full range range of carefully selected **high quality** and **high value-for-money** operator and task seating. All of the chairs shown have the following features:-

- 5 Year Guarantee
- Gas seat lift
- Back height and angle adjustment
- Medium & high back options
- Fixed and adjustable arm options
- Optional seat slide
- Huge range of fabrics to choose from
- Other features as specified



SPECIFICATION:

Highly functional operator chair priced at entry level

- Extremely cost competitive
- PCB or Synchro Mechanism
- Optional inflatable lumbar
- Tamperproof version available

MOTION OPERATOR CHAIR



SPECIFICATION:

Enhanced version of the popular MOTION chair with additional features for superior support and adjustability.

- PCB or Synchro Mechanism
- Optional inflatable lumbar
- Ratchet back adjustment
- Polished metal or Black base

MOTION PLUS OPERATOR CHAIR



SPECIFICATION:

Trendy alternative to traditional round backed versions.

- PCB or Synchro Mechanism
- Optional inflatable lumbar
- Ratchet back adjustment
- Polished metal or Black base

BLADE SQUARE BACK OPERATOR CHAIR



SPECIFICATION:

Task chair with Mesh back for ventilation to users back

- Synchro mechanism
- Integrated adjustable lumbar support
- Polished metal or Black base
- Optional headrest

VENT HIGH BACK TASK CHAIR



PROFILO HIGH BACK TASK CHAIR

SPECIFICATION:

Task Chair with ergonomically designed profile back for correct posture control.

- PCB or Synchro Mechanism
- Optional inflatable lumbar
- Contoured seat with waterfall front
- Polished metal or Black base
- Optional headrest



ERGO HIGH BACK TASK CHAIR

SPECIFICATION:

Winner of the Ergonomic Excellence award, the combination of pelvic and spinal support provides superb comfort and reduces the incidence of back pain.

- Square or round back shape

- PCB or Synchro Mechanism
- Optional inflatable lumbar
- Contoured seat with waterfall front
- Polished metal or Black base
- Optional headrest



STYLO MANAGERIAL TASK CHAIR

SPECIFICATION:

Elegant managerial chair with integrated headrest

- Ergonomically shaped back
- Synchronised mechanism
- Contoured seat with waterfall front
- Polished metal base



PRINCIPAL MANAGERIAL TASK CHAIR

SPECIFICATION:

Ultimate functionality and looks in this superb managerial task chair.

- Ergonomically shaped back
- Synchronised mechanism
- Contoured seat with waterfall front
- Polished metal base
- Optional headrest
- Choose from fully upholstered or show wood back

Call now to arrange free chair demonstration and trial



- SPECIFICATION:**
- Robust 50mm diameter steel leg design
 - Wide range of top colours
 - Chrome or Grey leg finish
 - Choose from top shapes shown



JUPITER MODULAR TABLE

Jupiter, Saturn and Orion table ranges available in these shapes...

-  Square
-  Rectangular
-  Semi Circular
-  Circular
-  Trapezoidal

SPECIFICATION:

- Robust steel leg design with safe folding mechanism
- Wide range of top colours
- Chrome or Grey leg finish
- Choose from top shapes shown
- Tables nest together for compact storage



SATURN FLIP-TOP MODULAR TABLE

SPECIFICATION:

- Robust steel leg design with safe folding mechanism
- Wide range of top colours
- Chrome or Grey leg finish
- Choose from top shapes shown
- Tables nest together for compact storage



ORION MOBILE FLIP-TOP MODULAR TABLE

SPECIFICATION:

- Range of standard or fully bespoke shapes and sizes
- Choose from variety of leg designs (Arrowhead and Pole options shown)
- Wide range of top colours
- Manufactured from real wood veneers or hard wearing wood effect melamines.



LUNAR CONFERENCE TABLES

Ask about our **free** space planning & design service

Chairs

A selection of stylish and durable meeting and conference chairs to suit a range of budgets.

SPECIFICATION:

- Comfortable deep foam seat with waterfall front edge
- Chrome or Black steel legs with plastic feet to eliminate floor scratching
- Stackable up to 8 high
- Available in wide range of fabrics
- Optional extras:-
 - Chair linking device
 - Fixed arms
 - Writing Tablet



FLEET MULTIURPOSE STACKING CHAIR

SPECIFICATION:

- Attractive tubular chrome or silver steel frame
- Comfortable contoured seat and back
- Available in wide range of fabrics
- Optional extras:-
 - Chair linking bracket
 - Fixed arms
 - Optional Mesh back for improved ventilation
 - Cantilever version available



QUAD STACKING MEETING CHAIR

SPECIFICATION:

- Smart cantilever frame in polished chrome or silver steel
- Contoured seat with waterfall front edge
- Available in wide range of fabrics
- Stackable



FLEX CANTILEVER FRAME MEETING CHAIR

SPECIFICATION:

- Stylish chrome framed chair on castors
- Optional arm detail
- Feature wood back
- Available in wide range of fabrics



SPRINT MOBILE MEETING CHAIR

SPECIFICATION:

- Oak or Beech frame
- Available in wide range of fabrics
- Stackable



MERCURY WOOD FRAMED VISITOR CHAIR

SPECIFICATION:

- Oak or Beech frame
- Available in wide range of fabrics



MERCURY WOOD FRAMED ARMCHAIR

SPECIFICATION:

- Elegant curved frame
- Deep upholstery for added comfort
- Waterfall seat edge
- Available in wide range of fabrics



VENUS DELUXE BEECH FRAMED ARMCHAIR

SPECIFICATION:

- Trendy silver frame and feature wood back
- Comfortable contoured seat with waterfall front edge
- Available in wide range of fabrics
- Optional extras:-
 - Chair linking bracket
 - Fixed arms
 - Castors
 - Chair Stacking Trolley



ARC MEETING CHAIR



Occasional Use & Events

SPECIFICATION:

- Versatile polypropylene folding chair
- Tough but lightweight
 - Weigh only 3kg each
 - Tested to BS4875 level 4
 - Stacks up to 40 high when folded

- Optional click-on linking bracket
- Cross-brace prevents the chair sinking into the ground at outdoor events
- Choice of shell colour



POLY FOLD

SPECIFICATION:

All the benefits of the POLYFOLD plus the following extra features

- Tall contoured back provides extra support
- Vented back for improved ventilation
- Convenient hand hold for easier handling
- Upholstered seat pad version available



POLYFOLD PLUS

Trolleys



LOW HANG 2 ROW TROLLEY

SPECIFICATION:

Range of chair storage trolleys available for up to 204 chairs on a single trolley



HIGH HANG 3 ROW TROLLEY

Exam Furniture

SPECIFICATION:

- W600 X D600 x H730mm
- 25mm MDF top with lacquered MDF edge and moulded pen groove
- Slightly sloping top for improved ergonomics
- Easy fold frame with metal clips to prevent wobbling
- Choose from Grey top & Grey frame or Beech top & Black frame



FOLDING EXAM DESK ■

SPECIFICATION:

- Holds up to 25 Folding Exam Desks
- W1250 x D630 x H950mm (H1010mm when loaded)
- Black steel frame
- Locking Rubber Castors



EXAM DESK TROLLEY ■

Staging



Call to arrange a free demonstration – ask about our free planning service

Detachable leg design allows for different height and tiering

SPECIFICATION:

Popular system, designed to be lightweight, easy to assemble and compact for ease of storage.

- Easy to assemble and take down in a very short time
- Virtually any shape, size or height available
- Lightweight yet rigid and strong
- Designed to minimise system noise
- Modular platforms allow stage to be reconfigured into different layouts
- Range of stage surface finishes and stage edgings available
- Choose steps, handrails and other accessories



Stores 40m² of staging in 2m² of floor space

STORE & TRANSPORT KIT ■



Moving Walls...

MOVING WALLS ■



SPECIFICATION:

Make flexible use of your space

- Fantastic acoustic ratings
- Easy 1-person operation takes seconds
- System "locks-off" for safety
- First panel is a pass door when wall is locked in place
- Can be top hung or floor supported
- Huge range of finishes
- Panels can be fitted with windows





Specialist...

SPECIFICATION:

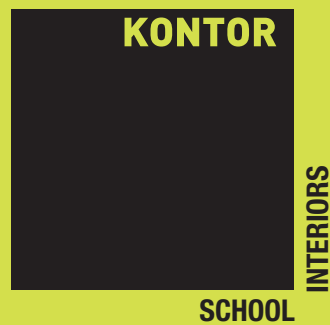
Specialist Laboratory and Food Technology Room furnishings

- Expertly installed by our fitters
- Full electrical and plumbing service
- Full design and specification service
- Wide range of finishes
- Other services available including flooring, decoration etc



Index...

A		E		P	
Art Storage Units	10	Ergonomic Chairs	39	Paper Storage Unit	10
		Exam Desk	44	Partition Screens	37
		Exam Desk Trolley	44	Pedestals	34
B				Peg & Bench Units	22, 23
Benches		F		Pigeonhole Units	25, 28, 33
- Changing Room	22	Filing Cabinets	34-36	Plan Chest	10
- Cloakroom	22	Fireproof Safes	36		
- Dining/Canteen	18	Fitted storage		R	
- Staffroom	29	- Classroom	11-12	Reception Counters	19, 24-26
Bookcase	11, 19-21, 35	- IT Suite	13	Reception Seating	26-27
Book Storage	10, 19-21	- Kitchen	28		
		- Office	30-33	S	
C		Folding Chairs	43	Safes	36
Canteen Units	17-18	Folding Exam Table	44	Screens	37
Chairs		Folding Tables	17-18, 40-41	Seating	
- Classroom	6	Food Tech Room	46	- Classroom	6
- Conference	42			- Conference	42-43
- Dining/Canteen	16-18	G		- Dining/Canteen	16-18
- Hall	43	Gratnells Trays	8	- Hall	43
- IT Suite	15			- IT Suite	15
- Meeting	41-43	H		- Meeting Room	42
- Office	38-39	Hatch System	26	- Office	38, 42
- Reception	26-27			- Reception	26-27
- Staffroom	29	I		- Staffroom	29
Changing Room Units	22, 23	IT Chairs	15	Shelving Units	11, 19-21
Classroom Chairs	6	IT Suites	13-15	Sofa's	26-27, 29
Classroom Stools	7			Stacking Chairs	42-43
Classroom Storage	8-12	K		Staging	44
Classroom Tables	4	K-Form Office Furnishings	30-32	Staffroom Units	28-29
Cloakroom Units	22, 23	K-Sort Library Shelving	19-21	Steel Storage	36
Coat Peg Units	22	K-Store Storage System	11	Stools	7, 16
Coffee Tables	27, 29	K-Style Reception Counters	24-26	Storage	
Computer Benching	3-15, 19	K-Tech IT Benching	13-15	- Classroom	8-12
Computer Chairs	15	Kinderbox Units	10	- Cloakroom	23
Computer Pod	14	Kitchen Units	28, 46	- Changing Room	23
Conference Chairs	40-43			- Food Tech Room	44
Conference Tables	40	L		- IT Suite	13
Counters	19, 24-26	Laboratory Furniture	46	- Kitchen	28
Cupboards		Library Units	10, 19-21	- Laboratory	44
- Classroom	8, 11	Lockers	23	- Library	19-21
- IT Suite	13			- Office	30-36
- Kitchen	28	M		- Staffroom	28
- Office	30-36	Managerial Task Chairs	39	Storage Wall	12, 32-33, 40-41
- Staffroom	28	Media Wall	12, 41-41		
- Steel	36	Meeting Points	34	T	
		Meeting Chairs	40-43	Tables	
D		Meeting Tables	40	- Canteen	16-18
Desks		Mobile Book Storage	10, 20-21	- Classroom	4
- Reception	19, 24-26	Mobile Canteen Units	17-18	- Dining	16-18
- Office	30-32, 34	Mobile Flip-top Tables	41	- Exam	44
Dining Chairs	16-18	Mobile Tray Storage Units	8	- Library	19
Dining Stools	16-18			- Office	34
Dining Tables	16-18	N		- Meeting	40
Display Boards	37	Noticeboards	37	Tambour Cupboards	30-36
				Task Chairs	38-39
		O		Tray Storage Units	8
		Office Chairs	38, 42	Tray Tables	5
		Office Furniture	30-36	Tub Chairs	27
		Operator Chairs	15, 38-39		



Tel: 0151 548 9879

Fax: 0151 547 4443

Email: mail@kontor.co.uk

www.kontor.co.uk

“hassle free interior solutions for schools”